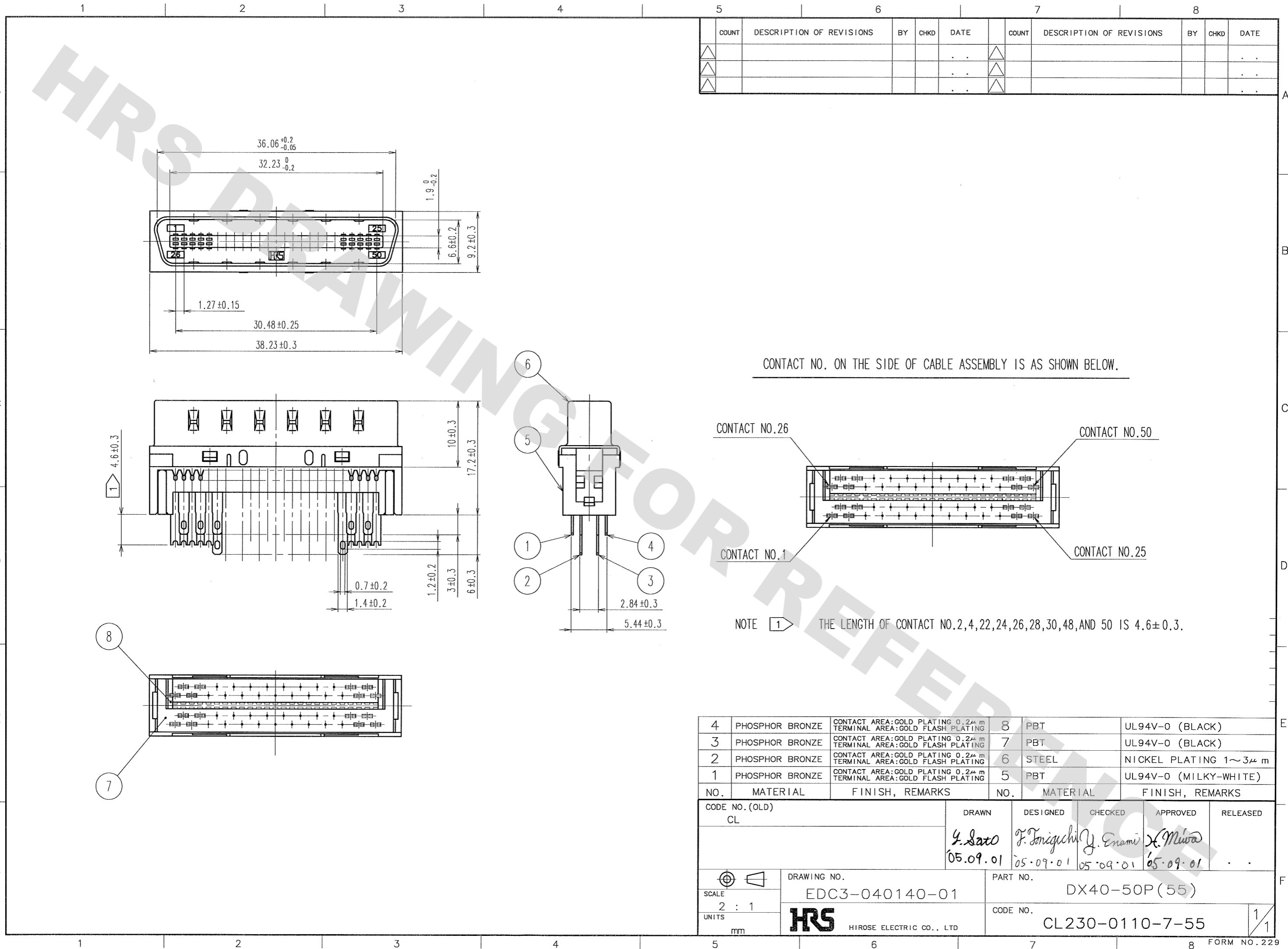


DRAWING FOR REFERENCE: This is subject to change without notice
08/11/2012



COUNT	DESCRIPTION OF REVISIONS	BY	CHKD	DATE	COUNT	DESCRIPTION OF REVISIONS	BY	CHKD	DATE
△					△				
△					△				
△					△				

4	PHOSPHOR BRONZE	CONTACT AREA: GOLD PLATING 0.2μm TERMINAL AREA: GOLD FLASH PLATING	8	PBT	UL94V-0 (BLACK)
3	PHOSPHOR BRONZE	CONTACT AREA: GOLD PLATING 0.2μm TERMINAL AREA: GOLD FLASH PLATING	7	PBT	UL94V-0 (BLACK)
2	PHOSPHOR BRONZE	CONTACT AREA: GOLD PLATING 0.2μm TERMINAL AREA: GOLD FLASH PLATING	6	STEEL	NICKEL PLATING 1~3μm
1	PHOSPHOR BRONZE	CONTACT AREA: GOLD PLATING 0.2μm TERMINAL AREA: GOLD FLASH PLATING	5	PBT	UL94V-0 (MILKY-WHITE)
NO.	MATERIAL	FINISH, REMARKS	NO.	MATERIAL	FINISH, REMARKS

CODE NO. (OLD) CL		DRAWN Y. Sato 05.09.01	DESIGNED T. Toniguchi 05.09.01	CHECKED Y. Enami 05.09.01	APPROVED X. Miwa 05.09.01	RELEASED
SCALE 2 : 1 UNITS mm		DRAWING NO. EDC3-040140-01		PART NO. DX40-50P(55)		
HRS HIROSE ELECTRIC CO., LTD		CODE NO. CL230-0110-7-55			1/1	

TO
Q1